

# T-7M1

## Transforming Data Sharing One Drive at a Time

### An Alternative Way to Store

Tired of carrying caseloads of CDs or DVDs worth of onsite data back to post production studios? With hard drive capacity hitting up to 3 Terabytes (about 40 DVDs), carrying a hard drive around makes a lot more sense in data heavy processes.

### Multiple Housing

These drive cages fit in a standard optical (CD or DVD rom) bay. Having more than one bay on most computer cases or chassis, users don't have to worry about getting data across the network when hard drives can be ejected from one machine and plugged into another with ease.

### Drive Caddy

The hard drives are mounted on a drive tray caddy with screws that guides the hard drive in and out of its cage. It acts as a metal cage protector as well as a carrying caddy for the road.

### Color Coding

The benefit of having multiple tray handle colors is that it helps users identify which drive houses which files without having to turn on the computer (assuming we all organize our files correctly). With the choices of Silver, Blue, Red, Black, and Plastic handles, there are more than enough codes to help differentiate the location of essential data.

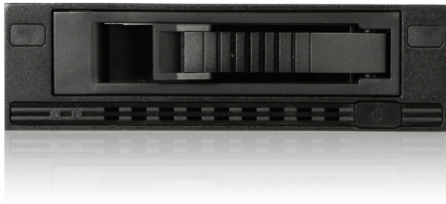
### Did we mention Hot-Swap?

TheT-7M1-SATA series are also hot-swap cages, which mean that hard drives can be removed from the cage while the computer is running. Give it a try; digital mobility awaits.

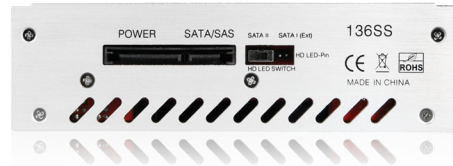


# T-7M1-SATA





## 1x5.25" Bay Audio SATA/SAS 6.0 Gb/s Mobile



Front View



Rear View

Dimensions (WxHxD)	5.75" x 1.65" x 7.32"	146.1 mm x 41.9 mm x 185.9 mm
Standard Drive Bays	5.25" Drives: 1	3.5" Hotswap: 1
Hotswap HDD Type	3.5" SAS I/II & SATA I/II/III	
Indicators	Power and HDD activity	
Material of Handle	Aluminum	
Material of Main Chassis	Aluminum Design	
Cooling Fan	1x80mm Cooling Fan	
Ordering Information	<div><div> T-7M1-SATA-BLACK</div><div> T-7M1-SATA-BLUE</div><div> T-7M1-SATA-RED</div><div> T-7M1-SATA-SILVER</div></div>	